



## INSTRUCTION BULLETIN

No. 340234  
Machine: 6200  
Published: 9-99/00  
System: OPTIONS

**NOTE: DO NOT DISCARD the Parts List from the Instruction Bulletin. Place the Parts List in the appropriate place in your machine manual for future reference. Retaining the Parts List will make it easier to reorder individual parts and will save you the cost of ordering an entire kit.**

*NOTE: Numbers in parenthesis ( ) are reference numbers for parts listed in Bill of Materials.*

Installation instructions for kit number 383983

### SYNOPSIS / PROBLEM:

This kit contains the parts needed to install a battery roll out kit on the model 6200 sweeper. Please follow step-by-step instructions.

### SPECIAL TOOLS / CONSIDERATIONS: NONE

(Estimated time to complete: 2 hours)

### PREPARATION:

(Refer to FIG. 1, 2 and 3)

**FOR SAFETY: Before leaving or servicing machine, stop on level surface and set parking brake. Then turn off machine and remove key.**

1. Disconnect battery cables from machine.
2. Raise the operator's seat and locate the battery compartment.
3. Disconnect the battery cables from the machine.



**WARNING: Always disconnect battery cables from machine before working on electrical components.**

### INSTALLATION:

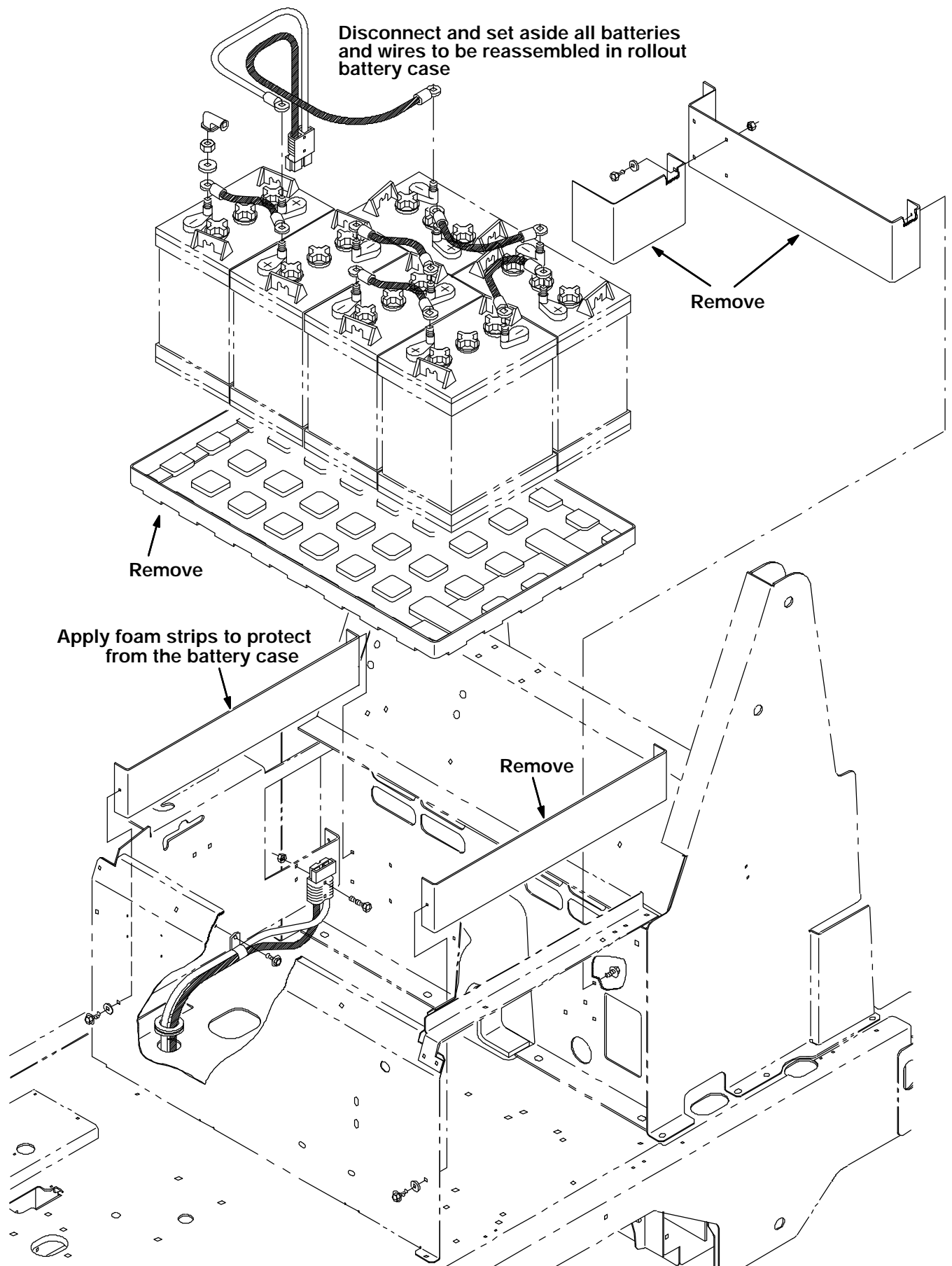
(Refer to FIG. 1, 2 and 3)

1. Remove the left side cover shroud. (Refer to FIG. 1)
2. Remove and set aside all battery cables. Remove and set aside all batteries from the machine. (Refer to FIG. 1)

*NOTE: The batteries will need to be reinstalled with the wires in the same pattern after the rollout case kit is installed. Take note of the battery cable hook up pattern before removal.*

3. Remove the plastic battery tray and battery spacers. (Refer to FIG. 1)
4. Remove the left side battery brace bracket. (Refer to FIG. 1)
5. Mount the battery roller mounting bar (1), battery roller channel (2), and bearing (3) assembly with hex screws (17) and washers (18). (Refer to FIG. 2)
6. Mount two foam strips (25) against the right side battery brace bracket. (Refer to FIG. 2)

7. Mount the channel bumper (23) to the left side of the machine with hex screws (24) and flat washers (18). (Refer to FIG. 2)
8. Install the brace support bracket (16) with hex screws (17) and washers (18). (Refer to FIG. 2)
9. Mount the battery brace bracket (19) to the seat support brace with hex screw (20), flat washer (21) and lock nut (22). (Refer to FIG. 2)
10. Mount the battery case brace (7) to the battery brace bracket (19) with a hex screw (26), washers (14) and lock nut (15). (Refer to FIG. 2)
11. Apply a small amount of locktite to one end of the threaded rod (9) and screw it into the knob (10). Thread the rod through the free end of the battery case brace (7). Apply another small amount of locktite to the opposite end of the threaded rod (9) and cap it off with a rubber bumper (8). (Refer to FIG. 2)
12. Raise the battery case brace (7), and slide the rollout battery case (11) onto the battery roller bracket assembly. (Refer to FIG. 2)
13. Lower the battery case brace (7) and place the free end into the brace support bracket (16). (Refer to FIG. 2)
14. Turn the knob (10) clockwise until the rollout battery case (11) is tight against the foam strips (25) on the opposite side of the machine. (Refer to FIG. 2)
15. Mount the battery stop bracket (12) to the bottom of the seat mounting weldment with hex screws (13), washers (14) and lock nuts (15). (Refer to FIG. 2)
16. Install the entire battery group into the rollout battery case (11) in the same formation prior to removal.
17. Replace the left side cover shroud.
18. Lower the operator's seat.
19. Turn on the machine and check batteries for proper operation.



**FIG. 1 - BATTERY GROUP REMOVAL**

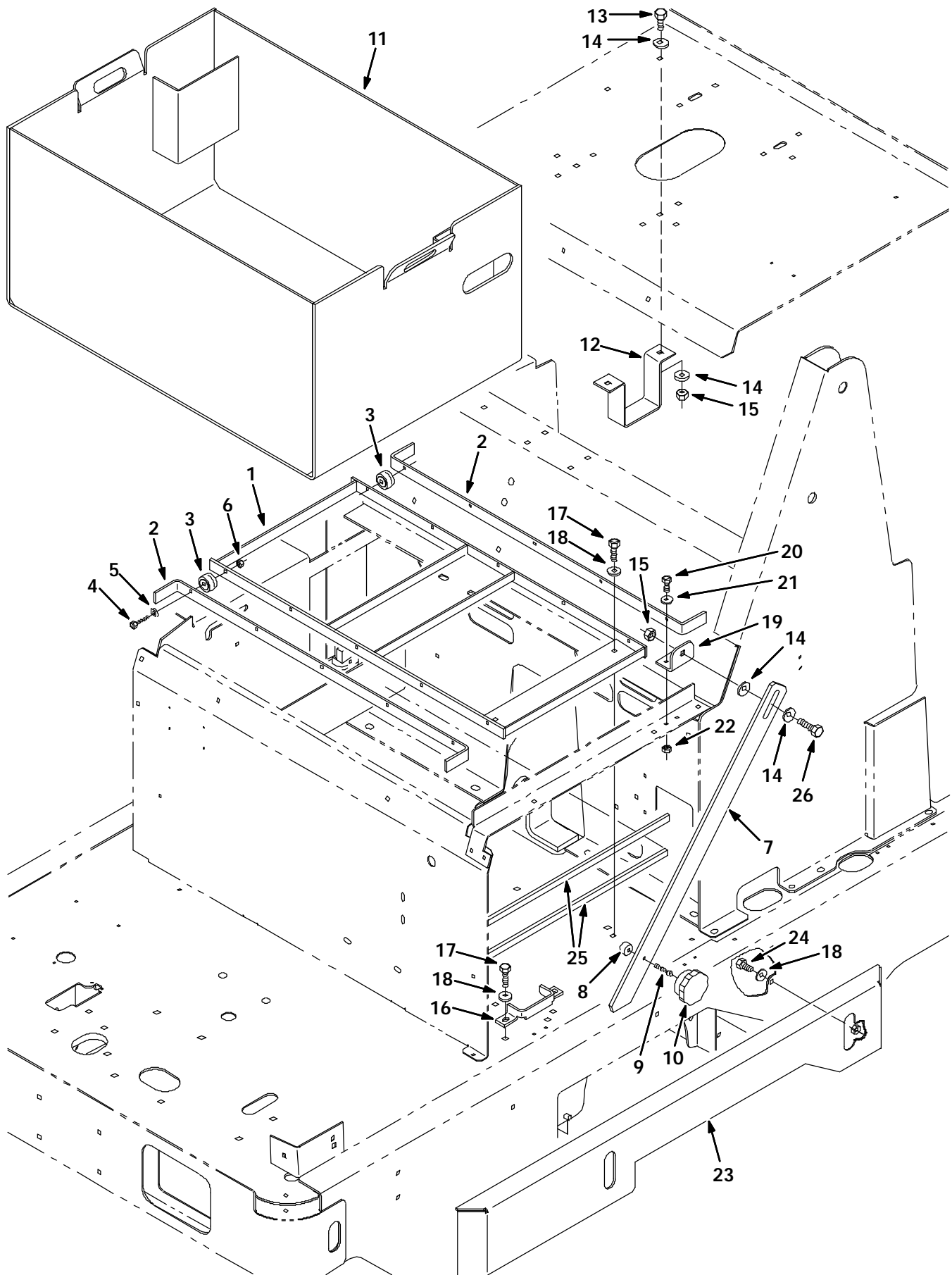


FIG. 2 - BATTERY ROLLOUT KIT INSTALLATION

# **BILL OF MATERIALS FOR BATTERY ROLLOUT KIT, 6200**

<b>Ref.</b>	<b>TENNANT Part No.</b>	<b>Description</b>	<b>Qty.</b>
1	223466	Bar, mounting, batt rollers	1
2	223476	Channel, stiffener, batt roll	2
3	369415	Bearing, cam followers	10
4	33930	Screw, hex, M06-1.0 X 40 ss	10
5	01684	Washer, flat, .25 ss	10
6	08712	Nut, hex, lock, M06-1.0 X 40, ss	10
7	383667	Brace, battery, case	1
8	83377	Bumper, rubber	1
9	83381	Rod, threaded, M6 X 1.50 lg	1
10	83361	Knob, 2.38D, .88H M6 insert	1
11	369483	Case, rollout battery	1
12	384031	Bracket, stop, battery	1
13	06961	Screw, hex, M10-1.5 X 20, 8.8	2
14	32492	Washer, flat, .38 hard	6
15	41430	Nut, hex, lock, M10-1.5, NI	3
16	83363	Bracket, support, brace	1
17	76570	Screw, hex, M08-1.25 X 30, 8.8	6
18	32491	Washer, flat, .31 hard	12
19	383986	Bracket, brace, battery	1
20	06942	Screw, hex, M06-1.0 X 16, 8.8	2
21	32483	Washer, flat, .25 sae	2
22	08708	Nut, hex, lock, M06-1.0, NI	2
23	383979	Channel wldt, bumper	1
24	16931	Screw, hex, M08-1.25 X 20, 8.8	6
25	384043	Seal, rbr, close, .25T .50W	2
26	39284	Screw, hex, M10-1.5 X 35, 8.8	1

TENNANT COMPANY  
P. O. Box 1452  
Minneapolis, MN 55440-1452